

## Columpio con base “Nautica outdoor” / swing chair with base

C361

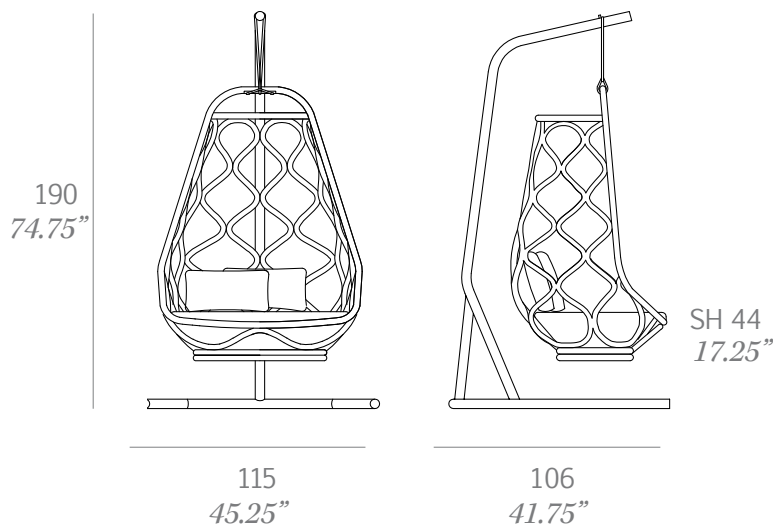
OUT



Columpio con base fabricado en tubo de aluminio de alta resistencia y rattan sintético HDPE, acabadas en pintura epoxi texturada.

Swing chair with base made of high-resistance aluminum tube and HDPE synthetic rattan, finished in textured epoxy paint.

Medidas / Dimensions	115 x 106 x 190 cm 45.25" x 41.75" x 74.75"
Peso / Weight	46 kg / 101 lb
Volumen / Volume	2,84 m <sup>3</sup> / 88 ft <sup>3</sup>



## Estructura / frame

---



600 white antique textured

## Base / base

---



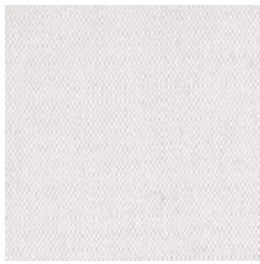
600 white antique textured



601 black matt textured

## Serie 6 - Confección / cushions

Tempotest®



sand C



sand GC



sand G



sand NE



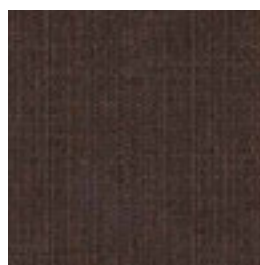
sand



sand BO



sand BN

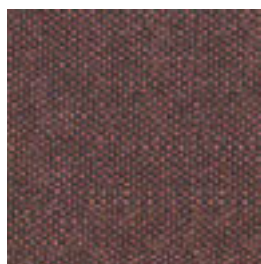


sand M

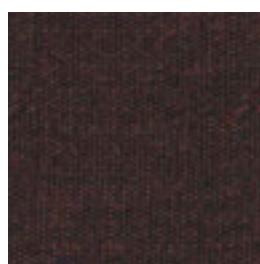
Seasons



seasons RC



seasons RM



seasons RO



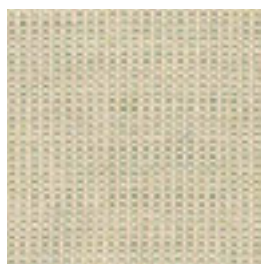
seasons AC



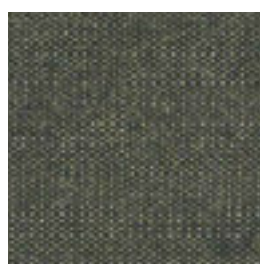
seasons AM



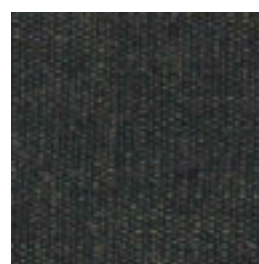
seasons AO



seasons VC



seasons VM



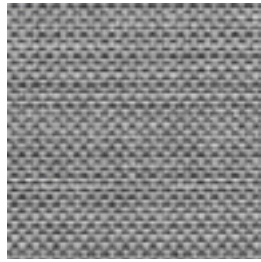
seasons VO

## Serie 2 - Confección / cushions

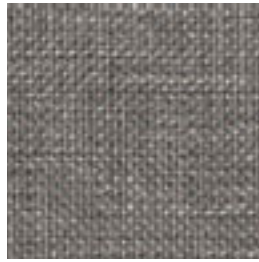
Dolce Outdoor



dolce 07



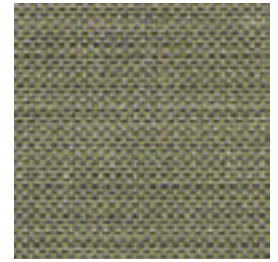
dolce 51



dolce 54



dolce 53



dolce 30

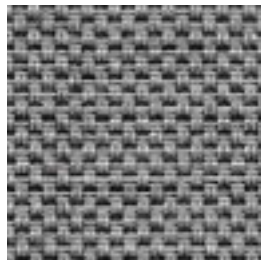


dolce 49

Duo Outdoor



duo 07



duo 51



duo 54



duo 14



duo 53



duo 05

## Serie 4 - Confección / cushions

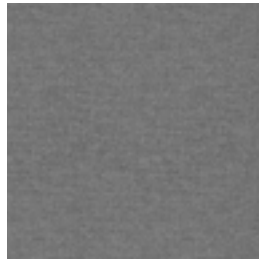
Silvertex™



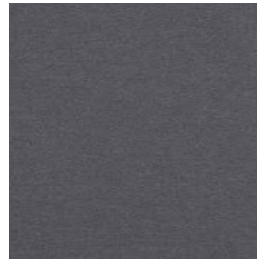
silvertex ice



silvertex plata



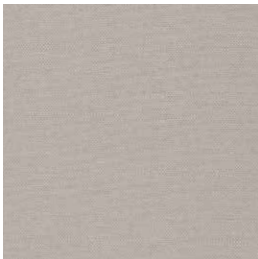
silvertex sterling



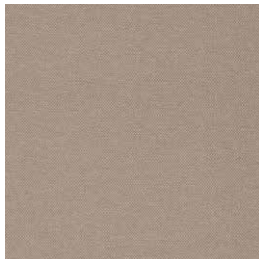
silvertex titanium



silvertex jet



silvertex macadamia



silvertex sandstone

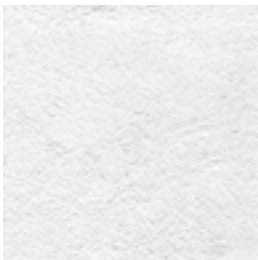


silvertex taupe



silvertex meteor

Zander®



zander pure white



zander auster